

LIKE A PRAYER

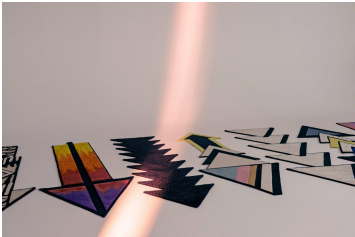
ARCHER COLLECTION

designed by Taher Asad-Bakhtiari



LIKE A PRAYER

ARCHER COLLECTION
designed by Taher Asad-Bakhtiari



LIKE A PRAYER

ARCHER COLLECTION
designed by Taher Asad-Bakhtiari

MODEL

Like a Prayer



COLOR

Standard

DIMENSIONS

350x110 cm

MATERIALS

Himalayan wool and matka silk

QUALITY

A+ (152.000 knots/sqm)

TAHER ASAD-BAKHTIARI



Taher Asad-Bakhtiari (B. 1982, Tehran) is a self-taught artist whose practice focuses on, but is not limited to, objects, textiles and experiences. After studying multimedia and management in Canada and Switzerland, Taher opened a creative agency in Tehran and later New York City. He has developed several bodies of work including "The Tribal Weave Project", a multi-tiered and ongoing reimagination of tribal artifacts, and "recovered barrels", a metaphorical conceptualization of crude oil containers. Taher lives in New York.

Piazza Santo Stefano, 10
20122 MILANO
T. +39 02 89093884
info@cc-tapis.com
cc-tapis.com

cc-tapis® cc-tapis® cc-tapis® cc-tapis® cc-tapis® cc-tapis® cc-tapis® cc-tapis® cc-tapis® cc-tapis®