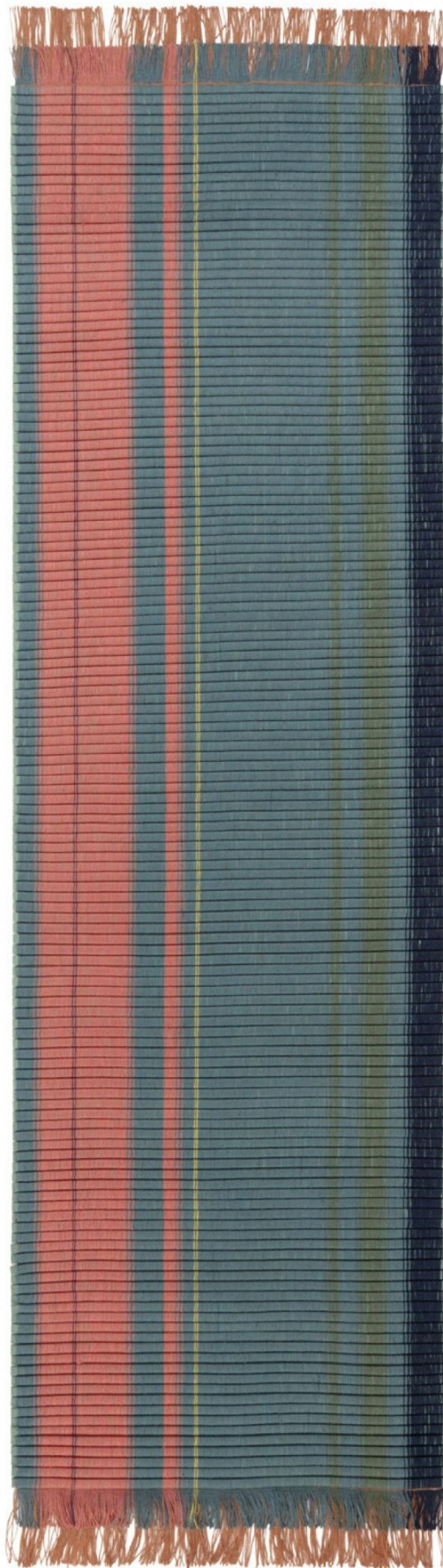


OMOTE RUNNER

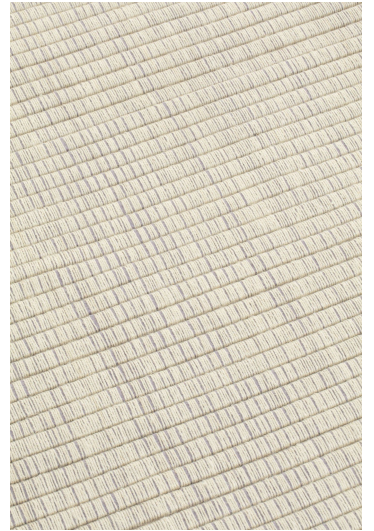
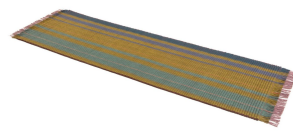
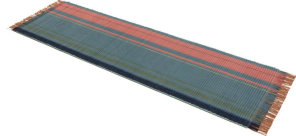
OMOTE COLLECTION
designed by Mae Engelgeer



OMOTE RUNNER

OMOTE COLLECTION

designed by Mae Engelgeer



OMOTE RUNNER

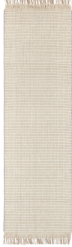
OMOTE COLLECTION
designed by Mae Engelgeer

MODEL

Omote fuyu runner

Omote haru runner

Omote haki runner



COLOR

fuyu

haru

haki

DIMENSIONS

90 x 300 cm cm

90 x 300 cm cm

90 x 300 cm cm

MATERIALS

Jute and felted wool

Jute and felted wool

Jute and felted wool

QUALITY

CUSTOMIZATION

Disabled

Disabled

Disabled

MAE ENGELGEER



Textile design has always been at the heart of Dutch designer Mae Engelgeer's work, from her high school days to her studies at the Amsterdam Fashion Institute and Sandberg Instituut. Since opening her own studio in 2013, she has nurtured her curiosity for the craft, experimenting within the existing boundaries of textile production to elevate old techniques to a modern stage. Mae Engelgeer's work embraces subtle color palettes, patterns and linear elements. Complex compositions merge with perfection to establish harmony. Creative explorations into the contrasting of materials and textures result in works that are luxurious in their tactility and dimensionality. In addition to developing her own collections, Mae Engelgeer collaborates with brands around the world on projects ranging from textile products and furniture design to material explorations and art direction to large-scale installations and public artworks. "My work is driven by intuition and the desire to create. While I consider myself to be a dreamer in the creation of new atmospheres, I am able to quickly translate those ideas into tangible works using the right textures, materials and colors. When asked for my vision in collaborations, I feel a certain sense of freedom to explore a multitude of possibilities."

