

EYES IN CHAINS

EYES IN CHAINS COLLECTION

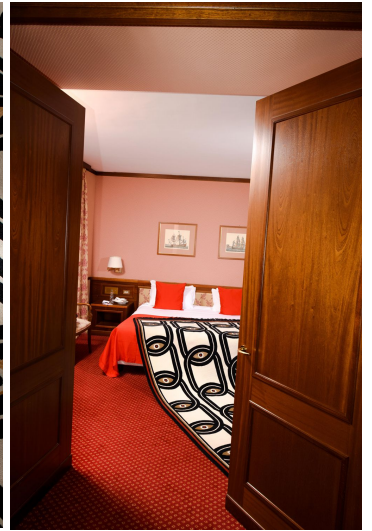
designed by Federico Pepe



EYES IN CHAINS

EYES IN CHAINS COLLECTION

designed by Federico Pepe



EYES IN CHAINS

EYES IN CHAINS COLLECTION

designed by Federico Pepe

MODEL

Eyes in Chains



COLOR

Standard

DIMENSIONS

230x300 cm

MATERIALS

*cotton weave, Himalayan
wool and silk*

QUALITY

*A+ (152.000 knots / sqm
approx.)*

CUSTOMIZATION

Size

FEDERICO PEPE



Federico Pepe was born in Omegna in 1976 and lives and works in Milan. Federico Pepe is a designer with an interest in how the communication process can be shaped, fully aware that the act of designing is increasingly an intertwining of disciplines. He is able to initiate and build relationships and experiences, educated to move between different practices, he is an artist, author, director, catalyst, cultural operator, creative, publisher, entrepreneur, curator, producer and adman.

