

ROVERELLA

CINQUECENTO COLLECTION
designed by Studio Klass



ROVERELLA

CINQUECENTO COLLECTION

designed by Studio Klass

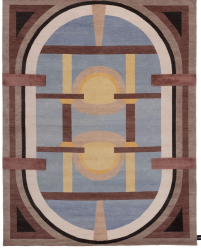
ROVERELLA

CINQUECENTO COLLECTION

designed by Studio Klass

MODEL

Roverella



COLOR

Standard

DIMENSIONS

230x300 cm

MATERIALS

Himalayan wool and silk

QUALITY

A (125.000 knot/sqm approx.)

CUSTOMIZATION

Size

STUDIO KLASS



In 2009 Marco Maturo and Alessio Roscini founded Studio Klass, an industrial design agency based in Milano. The studio operates in several areas, from furniture to product design and, over the years, has collaborated with Italian and international companies, presenting its products during many design fairs and events in Milan, Paris and New York. The work of Studio Klass aims to innovate function and the way of use products, with a particular attention to materials and forms. Studio Klass website.

