

STROKE RUNNER

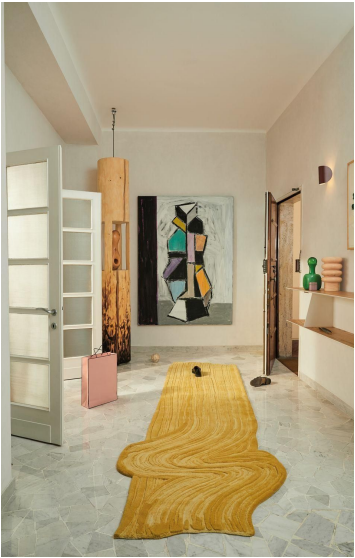
STROKE COLLECTION

designed by Sabine Marcelis



STROKE RUNNER

STROKE COLLECTION
designed by Sabine Marcelis



STROKE RUNNER

STROKE COLLECTION
designed by Sabine Marcelis

MODEL

Stroke runner

Stroke runner



COLOR

Yellow

Nude

DIMENSIONS

110x350cm cm

110x350cm cm

MATERIALS

cotton weave, himalayan
wool

cotton weave, himalayan
wool

QUALITY

A+ (152.000 knots/sqm
approx.)

A+ (152.000 knots/sqm
approx.)

CUSTOMIZATION

Size and color

Size and color

SABINE MARCELIS

Sabine Marcelis is a Dutch designer who runs her practice from the harbor of Rotterdam. After graduating from the Design Academy of Eindhoven in 2011, Marcelis began working as an independent designer within the fields of product, installation and spacial design with a strong focus on materiality. Her work is characterized by pure forms which highlight material properties. Marcelis applies a strong aesthetic point of view to her collaborations with industry specialists. This method of working allows her to intervene in the manufacturing process, using material research and experimentation to achieve new and surprising visual effects for projects both showcased in musea and commissioned by commercial clients and fashion houses. Sabine considers her designs to be true sensorial experiences and not simple static works: the experience becomes the function, with a refined and unique aesthetic. Sabine recently won the prestigious Wallpaper award 'Designer of the year 2020', the Design Prize 2019 in the 'Newcomer of the year' category, the Elle Deco International Design award 2019 'Young designer of the year' and 'GQ Men of the year 2019' International Artist of the year.

cc-tapis.

Piazza Santo Stefano, 10
20122 MILANO
T. +39 02 89093884
info@cc-tapis.com
cc-tapis.com

cc-tapis® cc-tapis® cc-tapis® cc-tapis® cc-tapis® cc-tapis® cc-tapis® cc-tapis® cc-tapis® cc-tapis®