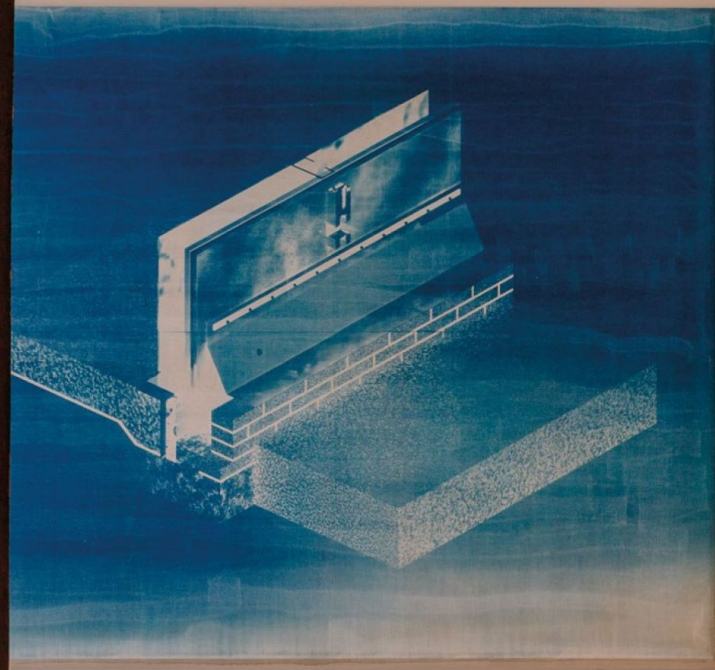


SUPER RUNNER

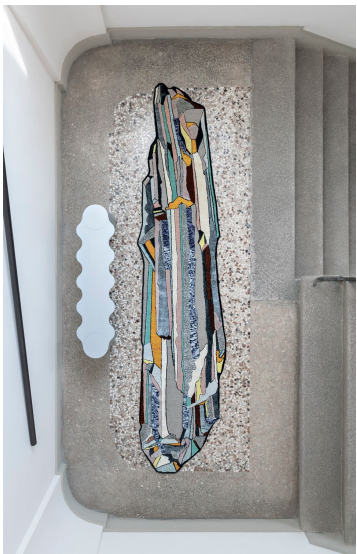
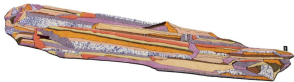
SUPER FAKE COLLECTION

designed by Bethan Laura Wood



SUPER RUNNER

SUPER FAKE COLLECTION
designed by Bethan Laura Wood



SUPER RUNNER

SUPER FAKE COLLECTION
designed by Bethan Laura Wood

MODEL

Super Runner

Super Runner



COLOR

Hot

Moon

DIMENSIONS

80x350 cm

80x350 cm

MATERIALS

cotton weave, himalayan wool, pure silk, linen

cotton weave, himalayan wool, pure silk, linen

QUALITY

A (125.000 knots/sqm approx.)

A (125.000 knots/sqm approx.)

CUSTOMIZATION

Size

Size

BETHAN LAURA WOOD



Bethan Laura Wood obtained a MA in Design Products at the Royal College of Art, under the tuition of Jurgen Bey and Martino Gamper. Since graduating in 2009, Bethan has built a multidisciplinary practice characterized by material investigation, artisan collaboration, and a passion for colour and detail. Bethan enjoys exploring the relationships we make with objects in our everyday lives, and questions how they can become cultural conduits. She is interested in critical approaches to achieving sustainability in a mass consumption, production-driven context.

Piazza Santo Stefano, 10
20122 MILANO
T. +39 02 89093884
info@cc-tapis.com
cc-tapis.com

cc-tapis®