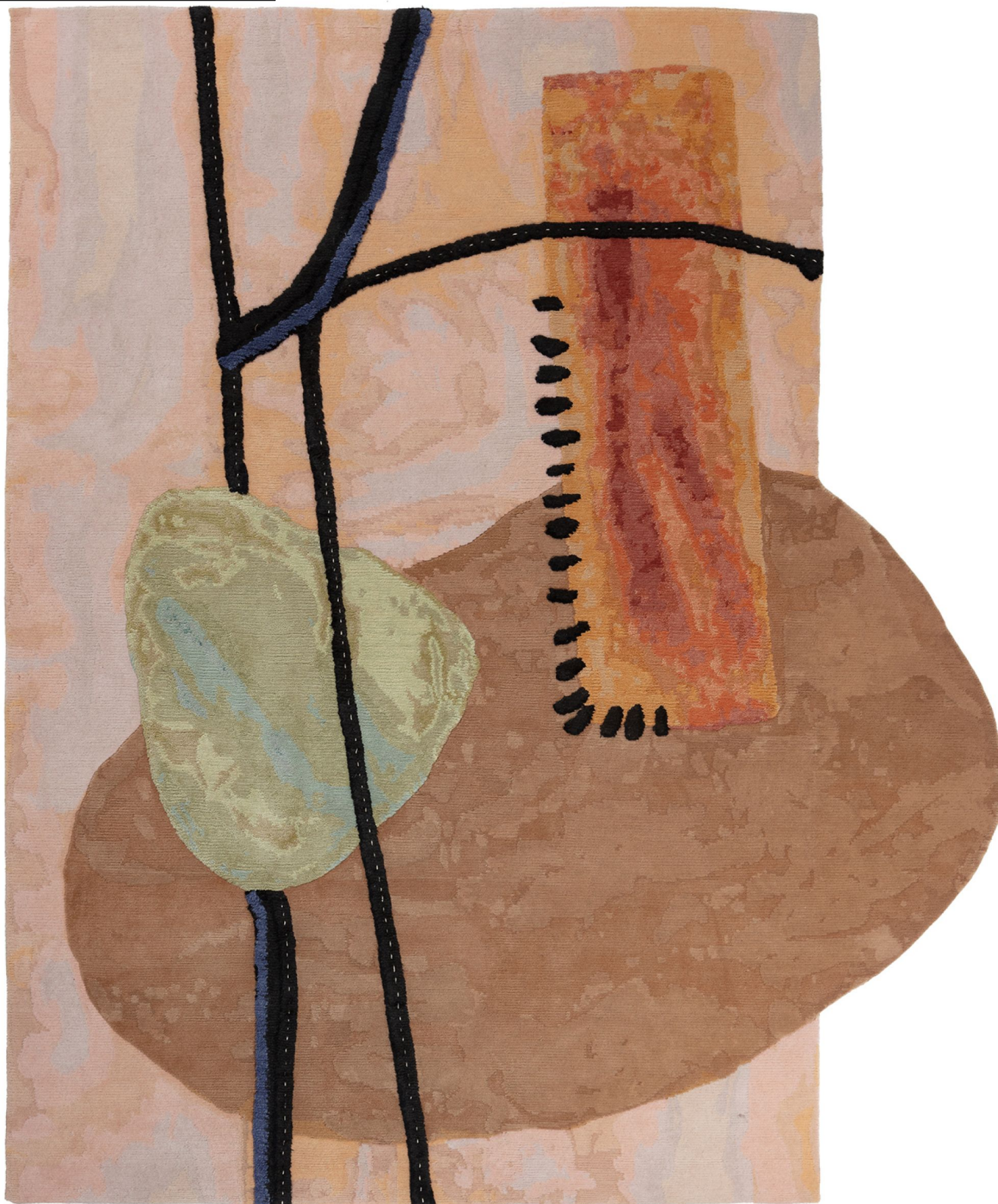


MANTLE PIECE

DOODLES COLLECTION

designed by Faye Toogood



MANTLE PIECE

DOODLES COLLECTION
designed by Faye Toogood

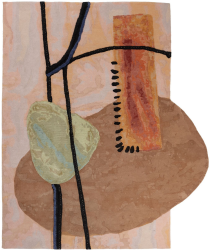


MANTLE PIECE

DOODLES COLLECTION
designed by Faye Toogood

MODEL

Mantle Piece



COLOR

Standard

DIMENSIONS

230 x 277 cm cm

MATERIALS

*Cotton weave, Himalayan
wool pile and cotton
stitching*

QUALITY

*A (125.000 knots / sqm
approx.)*

CUSTOMIZATION

Size

FAYE TOOGOOD



Faye Toogood is a British designer. Her furniture and objects demonstrate a preoccupation with materiality and experimentation. All of her pieces are handmade by small-scale fabricators and traditional artisans, with an honesty to the rawness and irregularity of the chosen material. With an academic training in the theory and practise of fine art, and a vocational background at the forefront of the magazine industry, Toogood approaches product design with a singular and acutely honed eye. Her highly sculptural work, while showing an astute respect for the past, is derived from pure self-expression and instinct. Toogood's objects are grouped together into her trademark numbered 'Assemblages'. This allows her to avoid the formulaic, to experiment with the materials and processes that dominate her thinking at a particular time. With each Assemblage, she engages not only with the products themselves but also with the three-dimensional space in which they are exhibited, working across multiple disciplines to create a single body of work with an intuitive and unified narrative.

Piazza Santo Stefano, 10
20122 MILANO
T. +39 02 89093884
info@cc-tapis.com
cc-tapis.com

cc-tapis® cc-tapis® cc-tapis® cc-tapis® cc-tapis® cc-tapis® cc-tapis® cc-tapis® cc-tapis® cc-tapis®