

cc-tapis.

handmade rugs

SPIRALÉ

SPIRALÉ COLLECTION

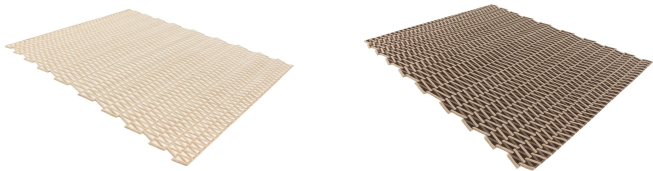
designed by Gaëlle Lauriot-Prévost and Dominique Perrault



SPIRALè

SPIRALé COLLECTION

designed by Gaëlle Lauriot- Prévost and Dominique Perrault



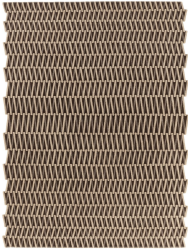
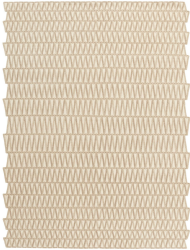
SPIRALÈ

SPIRALÉ COLLECTION
designed by Gaëlle Lauriot- Prévost and Dominique Perrault

MODEL

Spiralé

Spiralé



COLOR

Light undyed

Dark undyed

DIMENSIONS

230x300cm cm

230x300cm cm

MATERIALS

100% Himalayan wool

100% Himalayan wool

QUALITY

A+ (152.000 knots/sqm approx.)

A+ (152.000 knots/sqm approx.)

CUSTOMIZATION

Size and color

Size and color

GAËLLE LAURIOT- PRÉVOST AND DOMINIQUE PERRAULT



Gaëlle Lauriot-Prévost and Dominique Perrault have been key figures in contemporary creations since 1989. Gaëlle, an interior architect and designer, joined Perrault's agency, founded in 1981, at the inception of the Bibliothèque nationale de France project. Together, they have crafted a unique architectural language defined by innovative concepts like «groundscape», which refers to the architecture of underground spaces, as well as technical advancements; they were pioneers in the use of metal mesh in architecture. Over the past three decades, their collaboration has led to the creation of iconic buildings, including the major extension of the European Court of Justice in Luxembourg, Ewha Women's University in Korea, the DC Tower in Austria, the redesign of the Dufour Pavilion at the Chateau de Versailles, and the rehabilitation of the Pavillon de l'Aurore in Paris. For these projects, they also designed lighting and furniture. Recently included in the AD100 ranking, Gaëlle Lauriot-Prévost and Dominique Perrault express their architectural vision through furniture, objects, and lighting, always ensuring that the boldness of their designs serves a functional purpose.

Piazza Santo Stefano, 10
20122 MILANO
T. +39 02 89093884
info@cc-tapis.com
cc-tapis.com

cc-tapis®